

ST JOHN THE EVANGELIST CHURCH, ICKHAM

Diocese of Canterbury

THE PROJECT BRIEF

The new tea station was part of the first phase of a project planned by the PCC to improve facilities and access within the church. The west end of the north aisle was identified as being the most appropriate location for a new tea station, accessible WC and a small meeting room. It was a requirement that the tea station should be as visually discrete as possible and so it is visually separated from the main worship area in the nave by a custom made folding oak screen that can be opened up when refreshments are served. The PCC also plan to add a servery as part of later works.

THE PROPOSALS

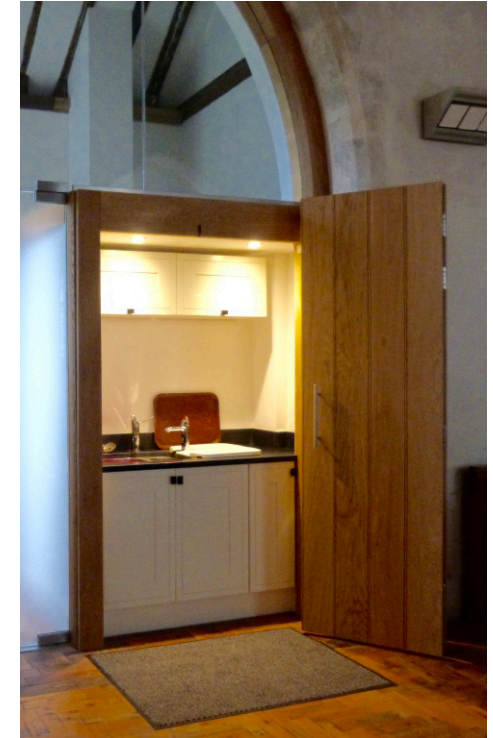
The tea station comprises off-the-peg white kitchen cupboard units containing a stainless steel sink and proprietary hot water dispenser. These are concealed behind a large oak bifold door. The unit has three lower compartments with two wall cupboards above to provide storage for china and cutlery, as well as the water heater and cleaning materials. Recessed ceiling downlights operate automatically when the oak door is opened.



Infill to west end of north aisle with tea station and meeting room on the left and accessible WC on the right



Tea station in closed position



View of tea station open for refreshments

PROJECT TEAM & SPECIALIST SUPPLIERS

Architects: Clague LLP
Main Contractor: Colman Contractors Ltd

PARISH CONTACT DETAILS

www.littlebournebenefice.org.uk
Telephone: 01227 721 233
e-mail: cwardenick@littlebournebenefice.org.uk

Photographs courtesy of Clague LLP

